

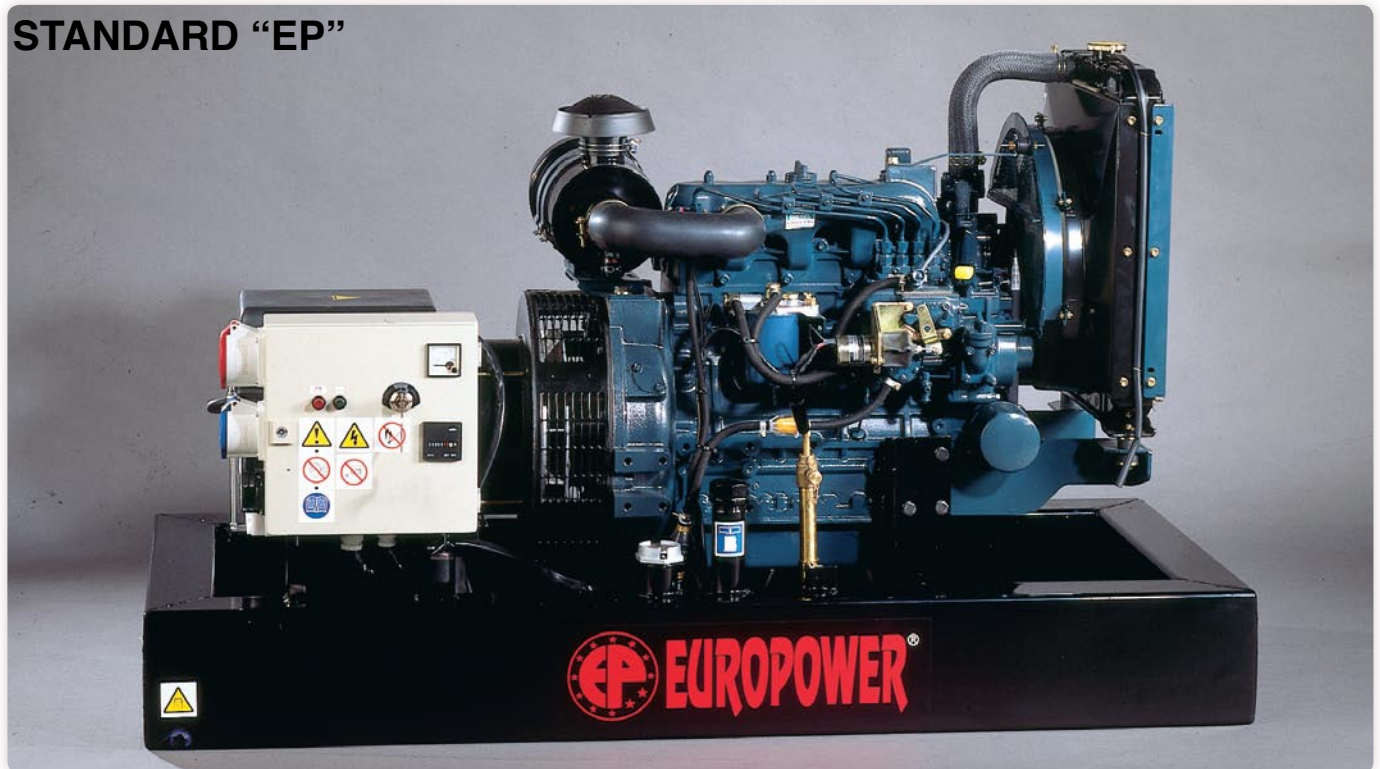
Generating Sets with KUBOTA water-cooled diesel engine.



8-40kVA

50Hz - 1500/min 4 Stroke

STANDARD "EP"



1500/min

TYPE	kVA max. (50 Hz)	kVA cont.	1 ~ 230 V	Amp. 3 ~ 400 V	Engine KUBOTA	Cyl.	cm ³	Tank (l)	Autonomy (h at 75% load)	Version	Dimens. (cm)	kg	dB(A) @ 7m	L _{WA}
EP8DE	8	7,2	32	-	D1105	3	1123	55	22	Y-FG-FI-ODP	130x64x86	340	70	95
EP9TDE	9	8,5	12	10						Y-AVR-FG-FI-ODP				
EP11DE	11	10	43	-	D1703	3	1647	65	17	Y-FG-FI-ODP	150x74x91	425	73	*
EP14TDE	14	13	19	15						Y-AVR-FG-FI-ODP				
EP18DE	18	16	70	-	V2203	4	2197	68	14	Y-FG-FI-ODP	160x74x94	465	75	*
EP20TDE	20	19	27	22						Y-AVR-FG-FI-ODP				
EP33TDE	33	30	46	34	V3300	4	3318	72	9	Y-AVR-FG-FI-ODP	160x83x98	600	77	*
EP32DE	32	29	125	-	V3300							675		
EP40TDE	40	36	56	41	Turbo							665		

* = Generators marked with an * cannot be used outdoors in the EC. For applications of generators indoors or if you want to integrate these generators in vehicles, please contact us.

SOCKETS

- EP8DE: 2 x Schuko 230V + 1 x CEE 230V - 32A - 3P
- EP9TDE: 2 x Schuko 230V + 1 x CEE 400V - 16A - 5P
- EP11DE / EP18DE / EP32DE: 1 x Schuko 230V + 1 x CEE 230V - 63A - 3P
- EP14TDE: 1 x Schuko 230V + 1 x CEE 230V - 32A - 3P + 1 x CEE 400V - 16A - 5P
- EP20TDE: 1 x Schuko 230V + 1 x CEE 230V - 32A - 3P + 1 x CEE 400V - 32A - 5P
- EP33TDE / EP40TDE: 1 x CEE 230V - 63A - 3P + 1 x CEE 400V - 63A - 5P



ref-03/2009



AJC Power Solutions
 Unit 10, Cosgrove Way,
 Luton, Bedfordshire,
 England LU11XL

Tel: **+44 (0) 0844 561 6856**
 email: **info@ajcpowersolutions.co.uk**
 website: **www.ajcpowersolutions.co.uk**

Generating Sets with KUBOTA water-cooled diesel engine.



7-24kVA

50Hz - 3000/min 4 Stroke

3000/min

TYPE	kVA max. (50 Hz)	kVA cont.	Amp.		Engine KUBOTA	Cyl.	cm ³	Tank (l)	Autonomy (h at 75% load)	Version	Dimens. (cm)	kg	dB(A) @ 7m	LWA
			1 ~ 230 V	3 ~ 400 V										
EP73DE	7	6	26	-	Z482	2	479	47	20	Y-FG-FI-ODP	105x64x79	190	78	*
EP83TDE	8	7,5	15	9						Y-FG-FI-ODP				
EP103DE	10	9	39	-	D722	3	719	50	16	Y-FG-FI-ODP	115x64x83	260	80	*
EP113TDE	11	10	15	12						Y-FG-FI-ODP				
EP163DE	16	14,4	63	-	D1105	3	1123	55	12	Y-FG-FI-ODP	130x64x86	320	81	*
EP183TDE	18	17	27	20						Y-AVR-FG-FI-ODP				
EP193DE	19	17,1	74	-	V1505	4	1498	65	10	Y-FG-FI-ODP	150x74x86	360	83	*
EP243TDE	24	23	35	27						Y-AVR-FG-FI-ODP				

* = Generators marked with an * cannot be used outdoors in the EC. For applications of generators indoors or if you want to integrate these generators in vehicles, please contact us.

SOCKETS

EP73DE / EP103DE: 1 x Schuko 230V + 1 x CEE 230V - 32A - 3P
 EP83TDE: 1 x Schuko 230V + 1 x CEE 400V - 16A - 5P
 EP113TDE: 2 x Schuko 230V + 1 x CEE 400V - 16A - 5P
 EP163DE / EP193DE: 1 x Schuko 230V + 1 x CEE 230V - 63A - 3P
 EP183TDE / EP243TDE: 1 x Schuko 230V + 1 x CEE 230V - 32A - 3P + 1 x CEE 400V - 32A - 5P

Amp = Amperemeter(s)
 AVR = Electronic voltage regulator (+/- 1%)
 BFT = Bunded fuel tank
 E = Electric Start (Battery included)
 ES = Emergency stop
 FG = Mechanical fuel level meter
 FH = Integrated forklift holes
 FI = Earth leakage protection 30mA
 FLM = Fuel level meter
 FP = Fuel pump
 h = Hour counter
 Hz = Frequency meter
 IB = Insulation protection
 LE = Central lifting eye
 LFLS = Low fuel level switch
 MS = Magneto-Stop
 ODP = Oil drain pump
 OP = Low oil pressure guard
 PI = Illuminated control panel
 TM = Thermal Magnetic breaker
 TP = High temperature security
 V = Voltmeter
 VS = Voltmeter selector switch
 WS = Water separator
 Y = E + FP + h + MS + OP + TM + TP + V
 Z = Amp + AVR + BFT + ES + FH + FLM + Hz + IB + LE + LFLS + PI + VS + WS



ref-03/2009



AJC Power Solutions
 Unit 10, Cosgrove Way,
 Luton, Bedfordshire,
 England LU11XL

Tel: **+44 (0) 0844 561 6856**
 email: **info@ajcpowersolutions.co.uk**
 website: **www.ajcpowersolutions.co.uk**